

LemTech

Lemtech Holdings Co., Limited

Lemtech Holdings Co., Limited

*Leading **E**ngineering & **M**anufacturing **Tech**nology*

2016H1 Performance Report

29 Aug 2016



Briefing Outline

- Corporate Profile
- Core Business Activities
- Our Valued Customers
- Czech investment plan
- Financial Report

- 提供的產品及服務包含：
精密模具、金屬沖壓、
專業客製化的散熱模組
鉸鏈/滑軌、給消費型電子產品、
伺服器產品、車用產品、
建築產品等等
- 全球四個國家設有營運據點及工廠
- 2011年正式在櫃檯買賣中心掛牌交易
- 2014年集團營額突破1億美元
- 2015年在臺灣證券交易所上市掛牌





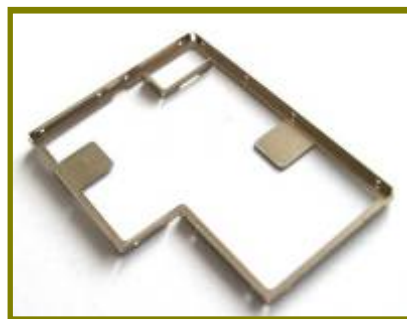
- **TAIWAN**
 - ★ Taipei (HQ)
- **CHINA**
 - KunShan
 - Hong Kong
- **THAILAND**
 - Ayutthaya
- **USA**
 - San Jose, CA
- **CZECH**
 - Jihlava

LemTech

Lemtech Holdings Co., Limited

Core Business Activities

消費型電子產品零件



行動電話系列之電源/音量/耳機



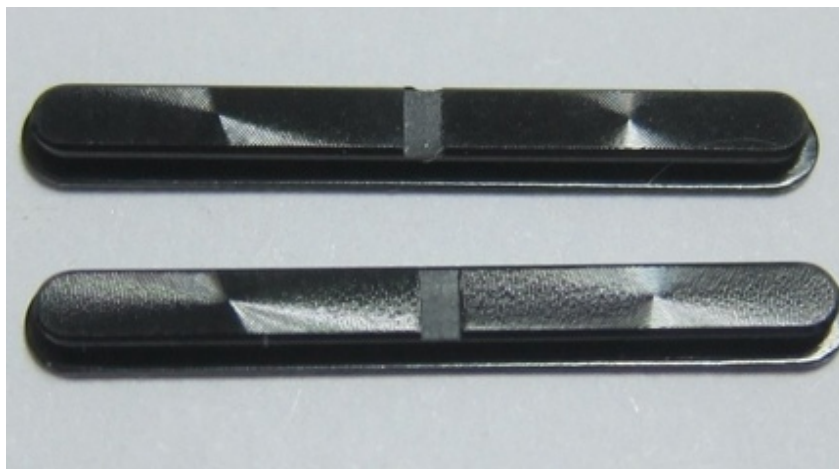
耳機環



音量鍵



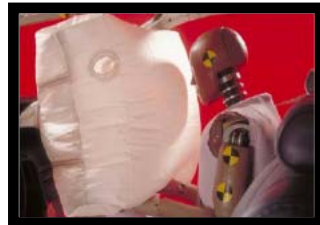
電源鍵



音量鍵

Parts For Various Automotive Applications

安全氣囊



安全帶系統



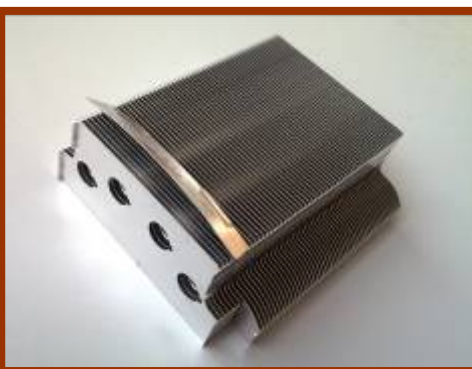
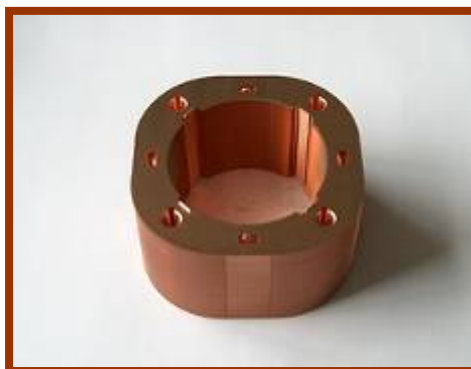
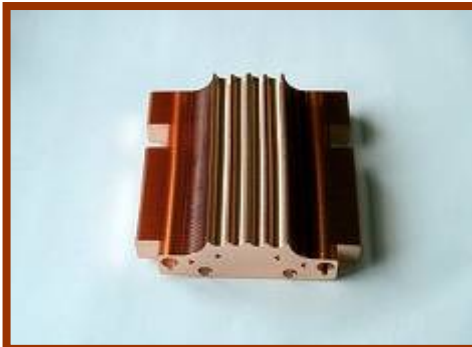
車門鉸鍊



天窗及音響設備

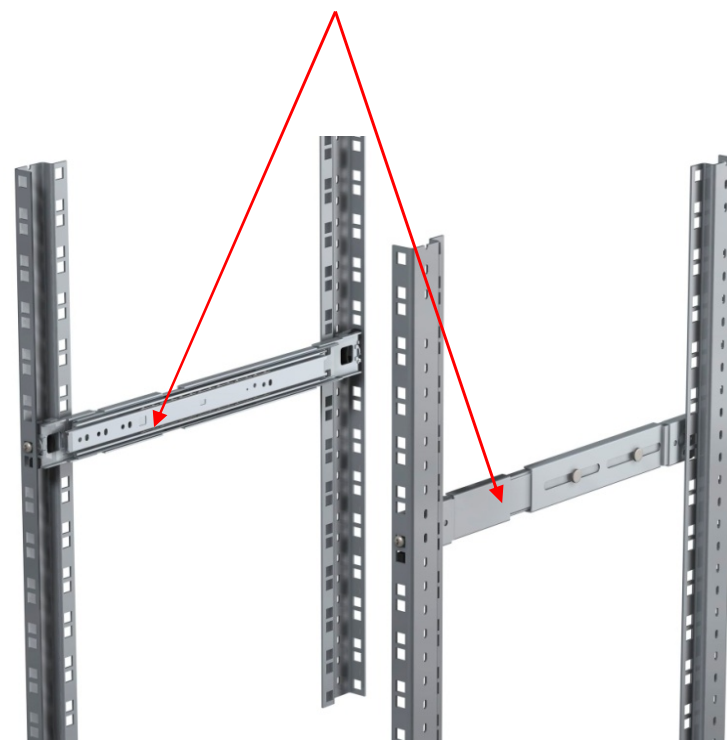
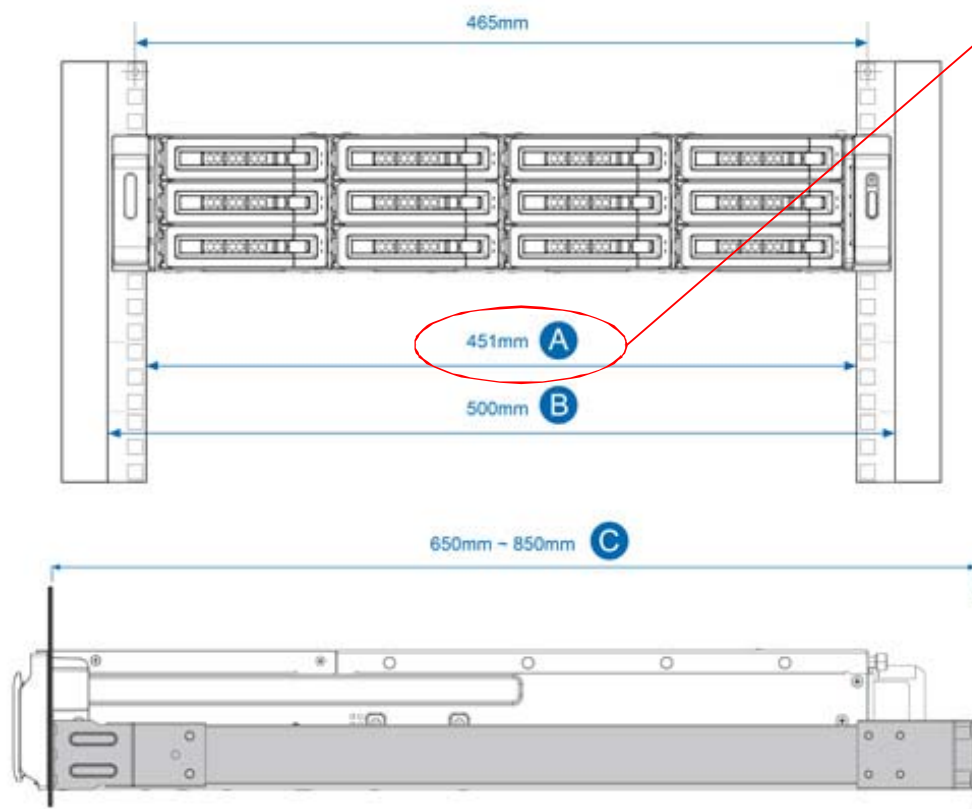


消費性電子散熱產品

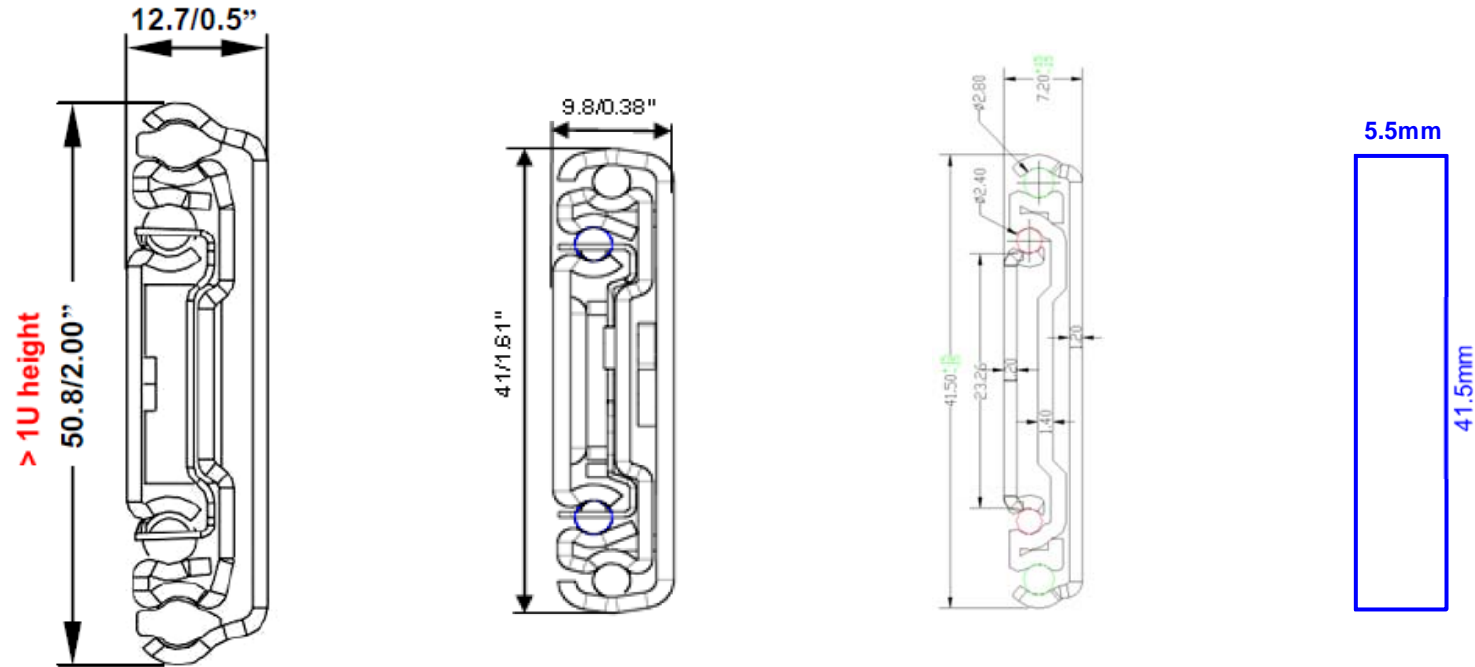


業界標準 19 吋 機架

架臂兩端的寬度 (451mm) 為侷限所在. 滑軌的厚度形成決定伺服器機架的最大寬度.



產品線開發方向 - 降低滑軌厚度，同時還要維持現有滑軌的承載能力



	< 2002	2002 to 2011	2012 to 2016	> 2016
Slide Thickness:	12.7mm	9.6mm	7.2mm	5.5mm
Suitable For:	1.5U to 5U	1U to 4U	1U to 4U	1U to 2U
Max System Weight:	80kg	60kg	48kg	38kg
Chassis Width:	< 434mm	< 434mm	434-436mm	< 440mm

LemTech

汽車產品客戶

Lemtech Holdings Co., Limited

TRW

ZKW
錦祥照明系統(大連)有限公司

Autoliv

Valeo

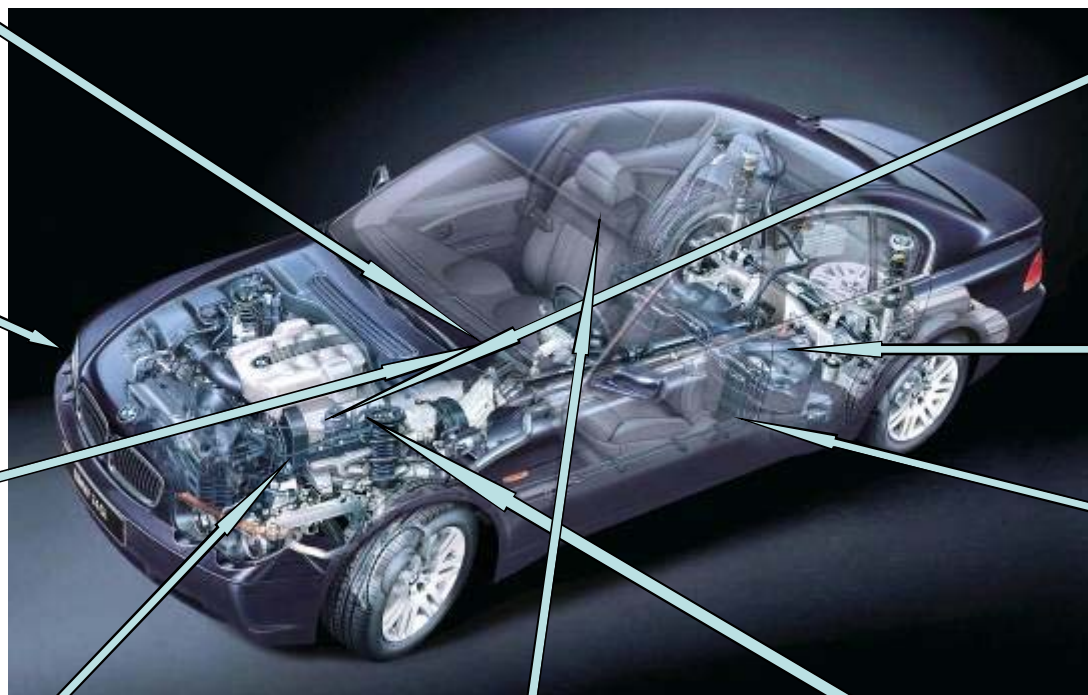
pollmann
INNOVATION WITH PRECISION

HITACHI
Inspire the Next

Edscha

kiekert

BorgWarner



LemTech

消費型電子產品客戶

Lemtech Holdings Co., Limited



AAVID
THERMALLOY



UBIQUITI
NETWORKS

ASUS®



DELL™

FLEXTRONICS®

FURUKAWA ELECTRIC

FOXCONN®
Advancing Through Innovation



JABIL

JUNIPER®
NETWORKS

Nidec
All for dreams



TOSHIBA
Leading Innovation >>>

Czech investment plan

Lemtech Czech Republic – New Site Start Up in Jihlava ~ For Stamping; Mechanical Assembly & Tool Servicing



General Information		
Total area (in sqm)	50 000	
Area available (in sqm)	12 000 (Possible to split)	
Available from	Immediately	
Location	Region	Vysocina
	District	Jihlava
	Town	Jihlava
	Address	Exit 112

Transport Infrastructure	
	Distance from site (in km)
Public transport	On site
Railway siding	Not possible

Infrastructure	
Comment	Fully serviced.



- Lemtech Czech:
 - ~ Initially to occupy half of Block B building @ 3,835 sqm
 - ~ Has the area capacity for expansion by renting the entire Block B building @ 7,700 sqm.

- Estimated Total Floor Area : 3,835 sqm
 - Production Area @ 3,563 sqm
 - Administrative Area @ 272 sqm



LemTech

Lemtech Holdings Co., Limited

Financial Report

	2012	2013	2014	2015	2016H1
流動資產	1,138,687	1,475,767	2,195,561	2,383,015	2,130,310
不動產、廠房及設備	361,709	569,940	604,325	701,618	826,753
其他資產	89,484	111,849	121,277	123,476	135,001
資產總額	1,589,880	2,157,556	2,921,163	3,208,109	3,092,064
流動負債	563,739	1,111,704	1,354,552	1,184,172	1,493,048
非流動負債	15,673	24,867	356,247	235,216	159,376
負債總額	579,412	1,136,571	1,710,799	1,419,388	1,652,424
權益總額	1,010,468	1,020,985	1,210,364	1,788,721	1,358,622

單位：新台幣仟元

	2012	2013	2014	2015	2016H1
合併營收	1,932,714	2,114,891	3,068,330	2,927,364	1,453,014
銷貨毛利	473,326	471,451	718,530	723,739	342,238
營業淨利	249,841	171,669	343,068	301,927	148,678
<u>稅後淨利</u>	<u>204,396</u>	<u>131,234</u>	<u>221,406</u>	<u>202,316</u>	<u>8,772</u>
<u>每股盈餘</u>	<u>7.24</u>	<u>4.00</u>	<u>6.73</u>	<u>5.19</u>	<u>(0.16)</u>

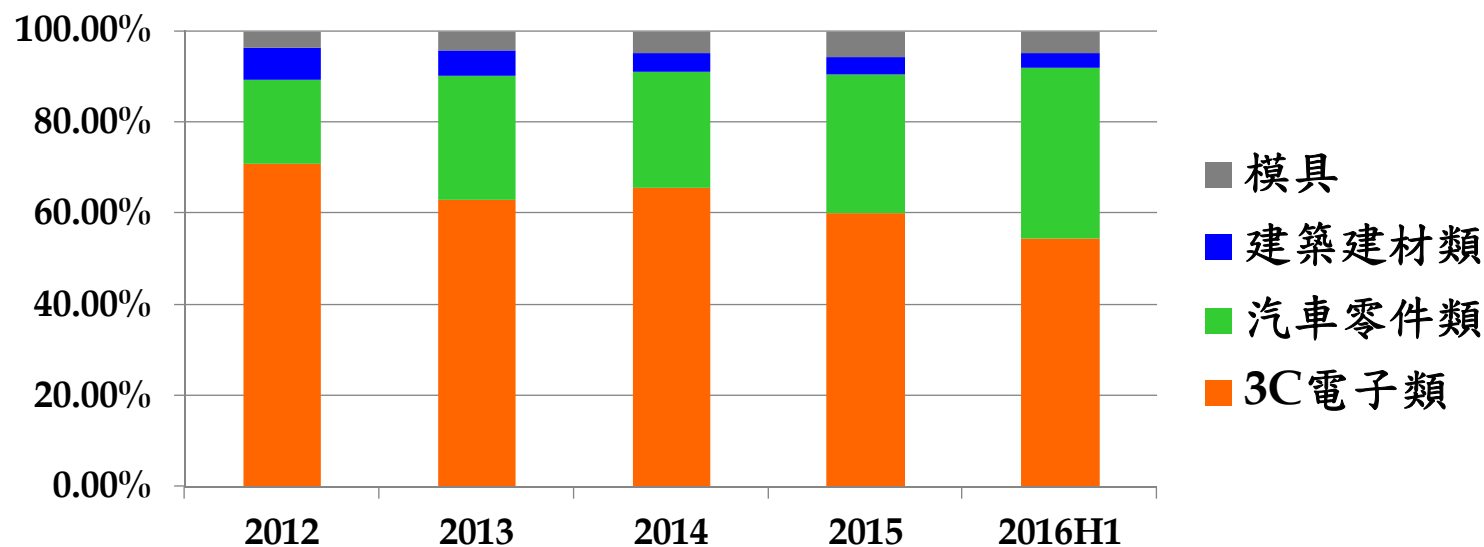
單位：新台幣仟元

	2012	2013	2014	2015	2016H1
營業淨利	249,841	171,669	343,068	301,927	148,678
營業外收入及支出					
其他收入	15,297	9,764	13,208	19,559	9,626
其他利益及損失	(14,621)	(12,123)	(41,619)	(40,251)	(8,458)
財務成本	(3,258)	(3,781)	(23,669)	(14,306)	(5,701)
採用權益法認列之關 聯企業及合資損益之 份額	-	3,523	1,367	(5,515)	(1,017)
稅前淨利	247,259	169,052	292,355	261,414	143,128
所得稅費用	(42,863)	(37,818)	(70,949)	(59,098)	(134,356)
稅後淨利	204,396	131,234	221,406	202,316	8,772

		2012	2013	2014	2015	2016H1
獲力能力	毛利率(%)	24.49	22.29	23.42	24.72	23.55
	費用率(%)	11.56	14.17	12.24	14.41	13.32
	營業利益率(%)	12.93	8.12	11.18	10.31	10.23
財務結構	負債比率(%)	36.44	52.68	58.57	44.24	53.44
	現金與約當現金 (仟元)	430,727	378,673	358,990	604,250	553,600
償債能力	流動比率(%)	204.59	132.75	162.09	201.24	142.68
	速動比率(%)	173.05	111.53	140.21	175.60	118.94
經營績效	應收款項週轉天數	96	106	97	116	113
	存貨週轉天數	41	44	39	47	49
	應付款項週轉天數	93	121	112	115	99

單位：新台幣仟元；%

主要產品	2012		2013		2014		2015		2016H1	
	銷值	%	銷值	%	銷值	%	銷值	%	銷值	%
3C電子類	1,370,297	70.90	1,331,346	62.95	2,013,689	65.63	1,756,201	59.99	792,145	54.52
汽車零件類	357,987	18.52	577,066	27.29	783,838	25.55	891,578	30.46	543,236	37.39
建築建材類	132,473	6.85	120,318	5.69	121,130	3.95	115,078	3.93	49,553	3.41
模具	71,957	3.72	86,161	4.07	149,673	4.88	164,507	5.62	68,080	4.68
合計	1,932,714	100.00	2,114,891	100.00	3,068,330	100.00	2,927,364	100.00	1,453,014	100.00



LemTech

Lemtech Holdings Co., Limited

LEMTECH

...Leading Engineering & Manufacturing Technology

Your Trusted Partner in Business

www.ky-lemtech.com

