

Lemtech Holdings Co., Limited

Leading **E**ngineering & **M**anufacturing **T**echnology

2018H1 Performance Report

Sep 2018



Briefing Outline

- Corporate Profile
- Core Business Activities
- Our Valued Customers
- Czech investment plan
- Financial performance and status

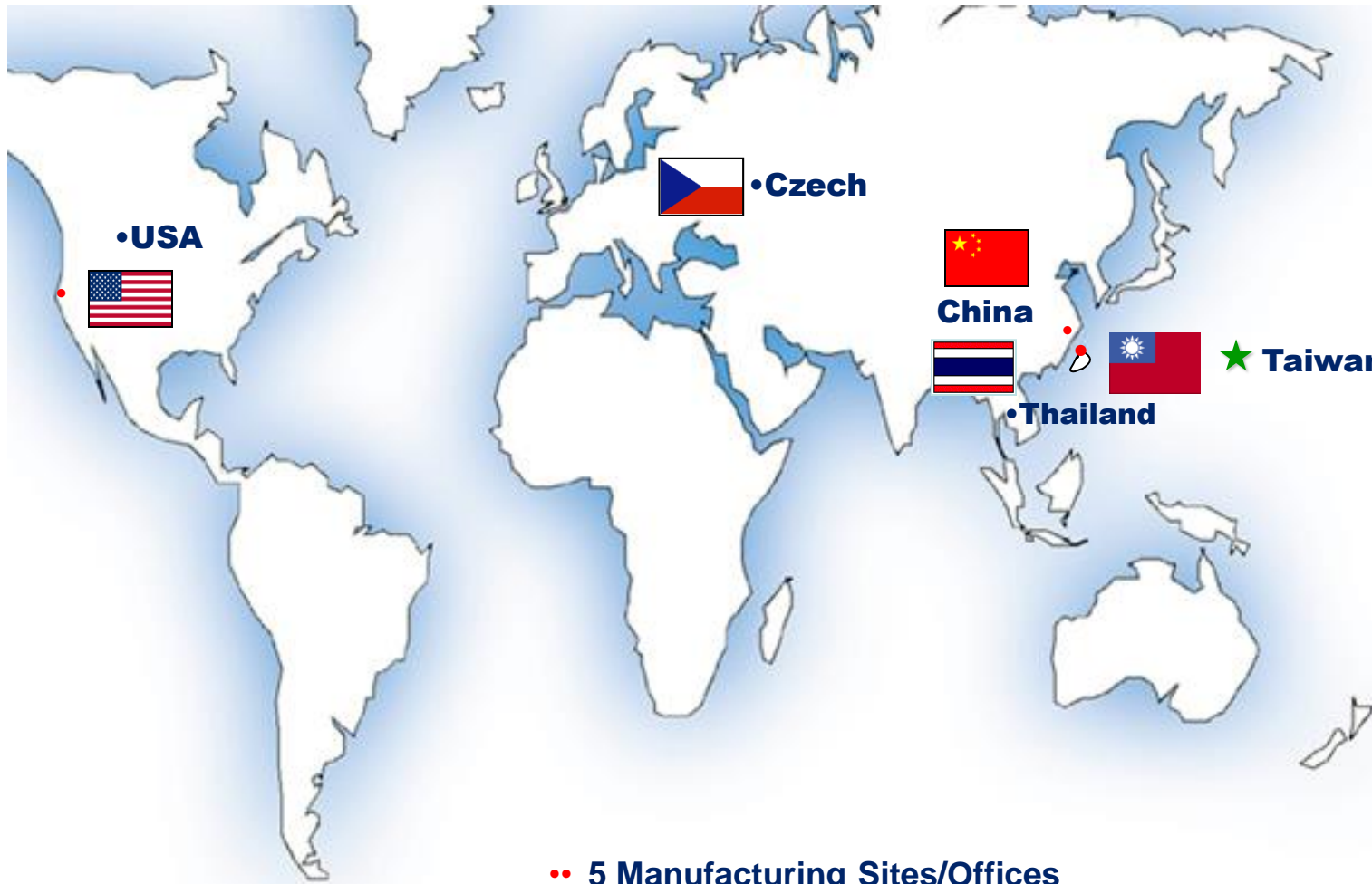
Corporate Profile

- 提供的產品及服務包含：

精密模具、金屬沖壓、
專業客製化的散熱模組
鉸鏈、伺服器滑軌、
給消費型電子產品、
車用零件及模組、
建築材料等



- 全球四個國家設有營運據點及工廠
- 2011年正式在櫃檯中心掛牌
- **2015年在臺灣證券交易所上市掛牌**
- 2014年營額突破1億美元
- 2017年營業額約1.4億美元 (YOY+32%)

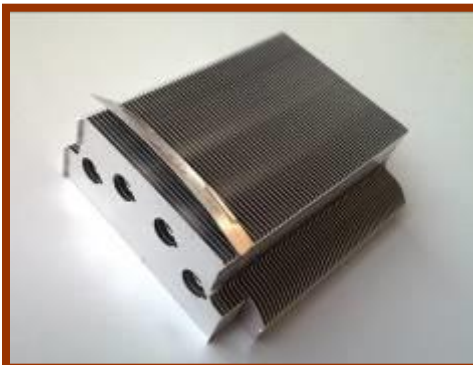
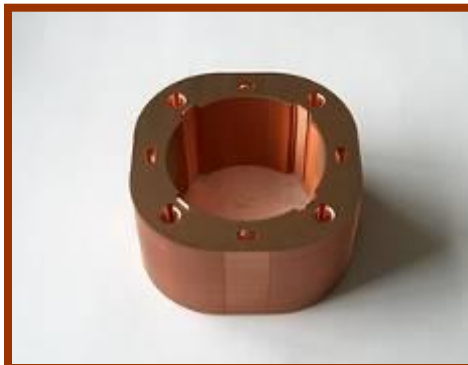
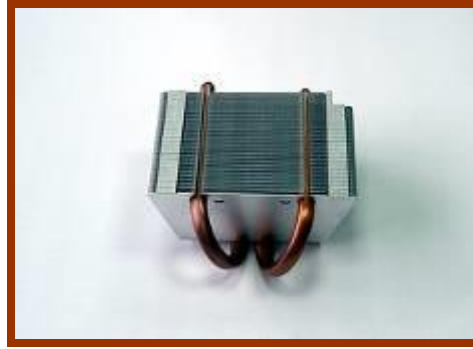


- **TAIWAN**
 - ★ Taipei (HQ)
- **CHINA**
 - KunShan
 - Hong Kong
- **THAILAND**
 - Ayutthaya
- **USA**
 - San Jose, CA
- **CZECH**
 - Jihlava

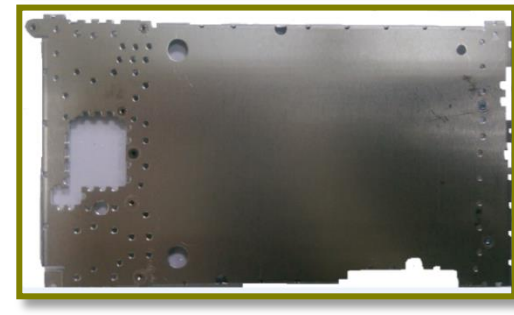
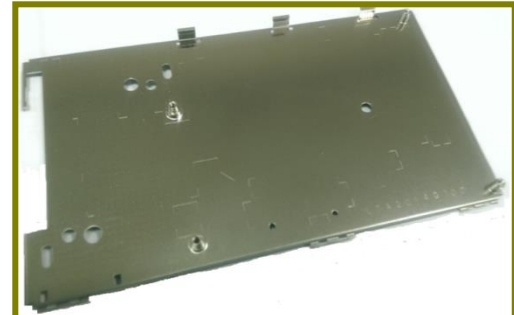
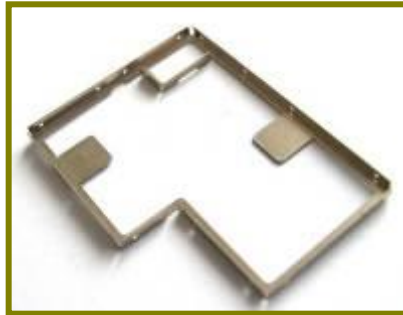
•• **5 Manufacturing Sites/Offices**
• ~ Total Floor Space: 500,000 sqft

Core Business Activities

消費性電子散熱產品



消費型電子產品零件



行動電話系列之電源/音量/耳機



耳機環



音量鍵



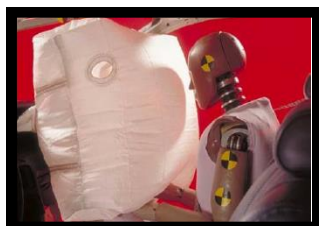
電源鍵



音量鍵

Parts For Various Automotive Applications

安全氣囊



安全帶系統

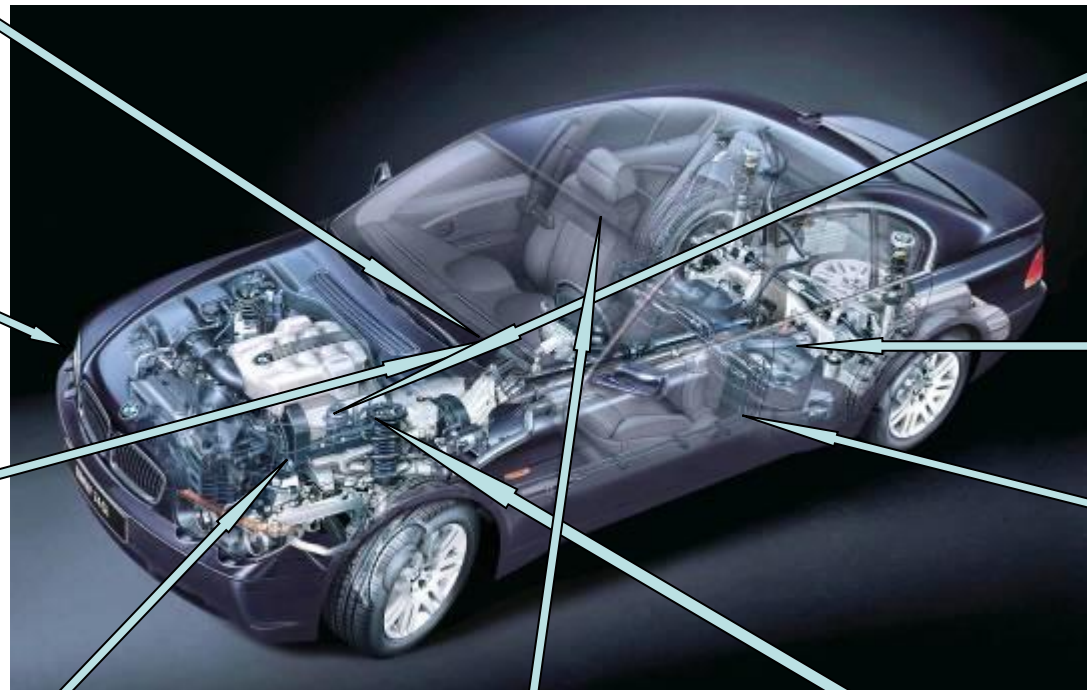


車門鉸鍊

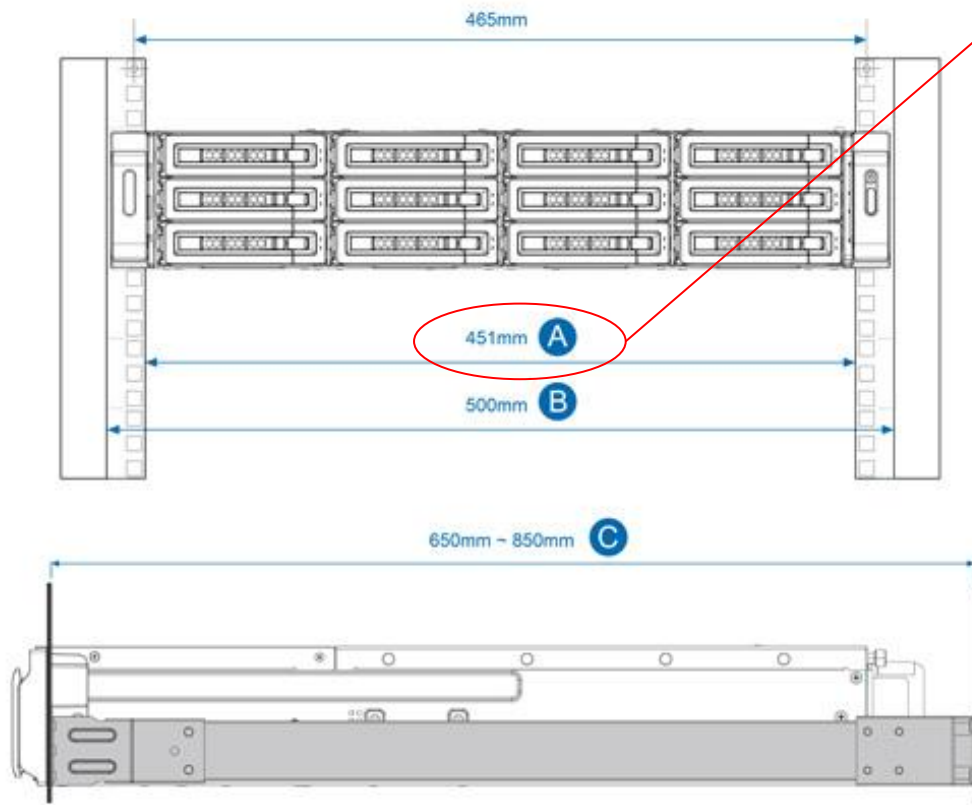


天窗及音響設備

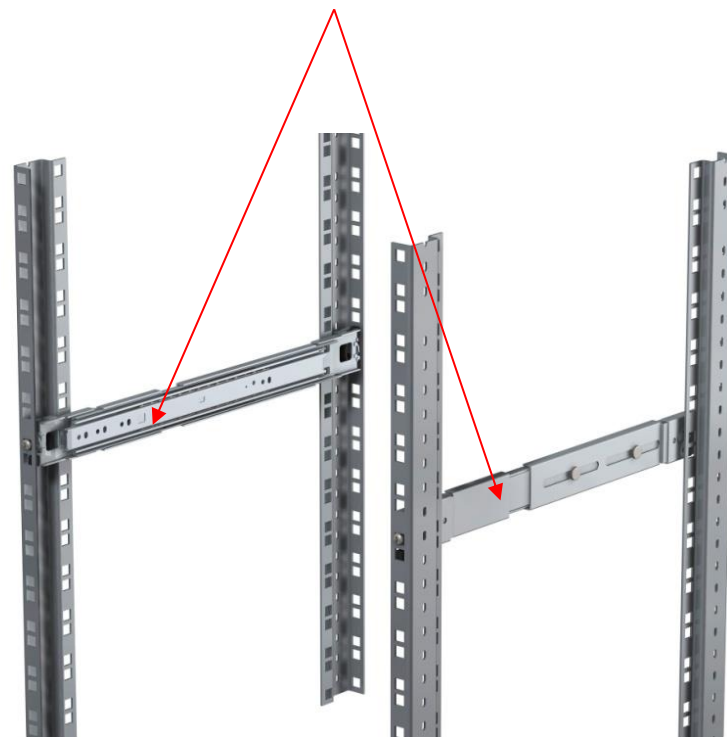


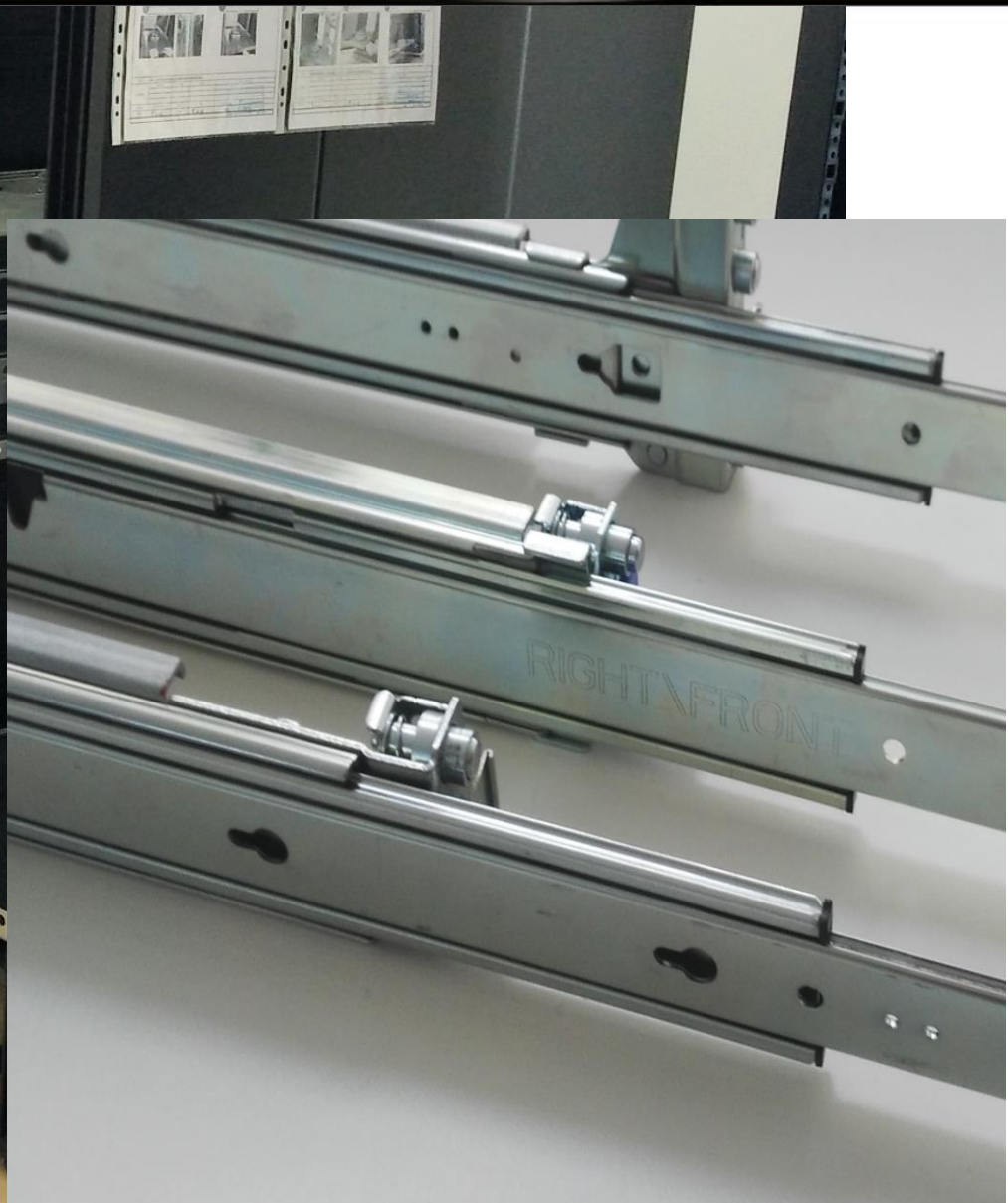


業界標準 19 吋 機架



架臂兩端的寬度 (451mm) 為侷限所在. 滑軌的厚度形成決定伺服器機架的最大寬度.





Our Valued Customers

LemTech

消費型電子產品客戶

Lemtech Holdings Co., Limited



Financial performance and status

	2014	2015	2016	2017	2018H1
流動資產	2,195,561	2,383,015	2,301,156	3,320,411	3,219,737
不動產、廠房及設備	604,325	701,618	680,583	970,751	1,115,447
其他資產	121,277	123,476	259,457	425,767	417,410
資產總額	2,921,163	3,208,109	3,241,196	4,716,929	4,752,594
流動負債	1,354,552	1,184,172	1,485,819	2,956,336	3,000,046
非流動負債	356,247	235,216	229,428	140,981	137,689
負債總額	1,710,799	1,419,388	1,715,247	3,097,317	3,137,735
權益總額	1,210,364	1,788,721	1,525,949	1,619,612	1,614,859

Lemtech Precision Material new layout



Lemtech Precision Material (Czech) s.r.o.



Total Floor Area: 3,835 m²

Administrative Area @ 272 m²

Production Area @ 3,563 m²



QA Measurement Machines	Year 1 (2017)	Year 2 (2018)	Year 3 (2019)
Coordinate Measuring Machine CMM	1		
Optical CMM	1		
Contour Measuring Instrument	1		
Coating Thickness Gauge	1		
Height Gauge	1		
Material Tensile Testing Machine		1	
Spray Testing Machine			1



單位：新台幣仟元

	2014	2015	2016	2017	2018H1
合併營收	3,068,330	2,927,364	3,197,375	4,255,549	2,246,360
銷貨毛利	718,530	723,739	761,428	872,771	433,721
營業淨利	343,068	301,927	319,948	340,548	114,063
<u>稅後淨利</u>	<u>221,406</u>	<u>202,316</u>	<u>100,013</u>	<u>314,516</u>	<u>72,312</u>
<u>每股盈餘</u>	<u>6.73</u>	<u>5.19</u>	<u>1.71</u>	<u>7.55</u>	<u>1.68</u>

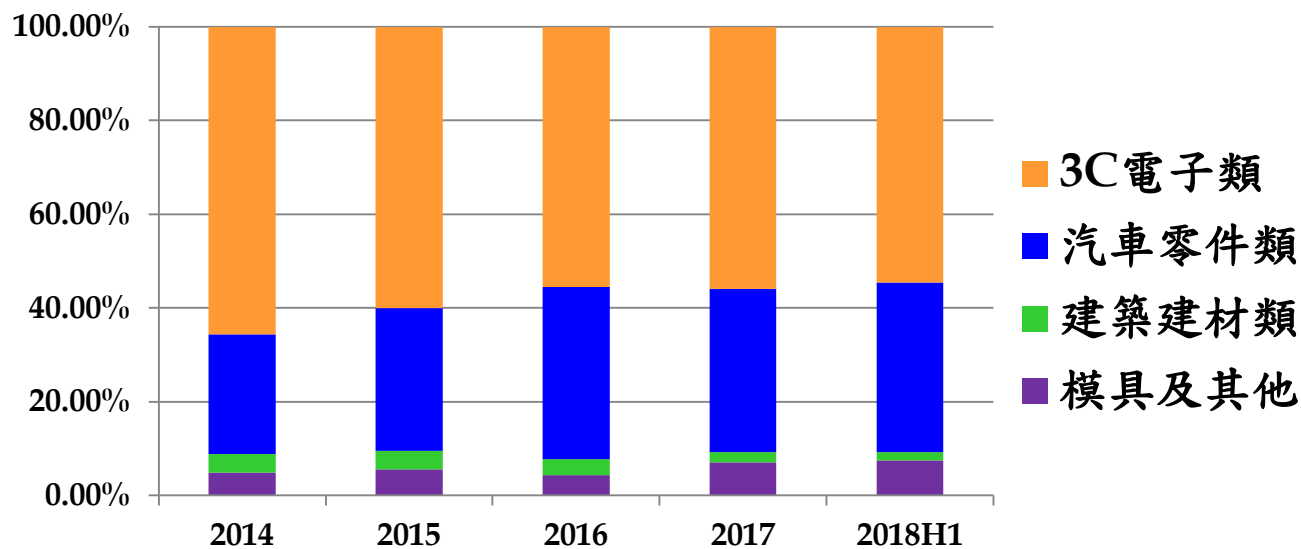
單位：新台幣仟元

	2014	2015	2016	2017	2018H1
營業淨利	343,068	301,927	319,948	340,548	114,063
營業外收入及支出					
其他收入	13,208	19,559	18,703	17,583	15,358
其他利益及損失	(41,619)	(40,251)	(51,361)	59,189	(20,240)
財務成本	(23,669)	(14,306)	(12,284)	(22,045)	(23,958)
採用權益法認列之關 聯企業及合資損益之 份額	1,367	(5,515)	(3,126)	(955)	4,808
稅前淨利	292,355	261,414	(48,068)	394,320	90,031
所得稅費用	(70,949)	(59,098)	(171,867)	(79,804)	(17,719)
稅後淨利	221,406	202,316	100,013	314,516	72,312

		2014	2015	2016	2017	2018H1
獲力能力	毛利率(%)	23.42	24.72	23.81	20.51	19.31
	費用率(%)	12.24	14.41	13.81	12.51	14.23
	營業利益率(%)	11.18	10.31	10.01	8.00	5.08
財務結構	負債比率(%)	58.57	44.24	52.92	65.66	66.02
	現金與約當現金 (仟元)	358,990	604,250	481,183	609,909	808,247
償債能力	流動比率(%)	162.09	201.24	154.87	112.32	107.32
	速動比率(%)	140.21	175.60	118.70	88.35	75.85
經營績效	應收款項週轉天數	97	116	117	129	136
	存貨週轉天數	39	47	58	61	77
	應付款項週轉天數	112	115	94	93	126

單位：新台幣仟元；%

主要產品	2014		2015		2016		2017		2018H1	
	銷值	%	銷值	%	銷值	%	銷值	%	銷值	%
3C電子類	2,013,689	65.63	1,756,201	59.99	1,776,136	55.55	2,377,270	55.86	1,225,391	54.55
汽車零件類	783,838	25.55	891,578	30.46	1,172,908	36.68	1,484,569	34.89	812,085	36.15
建築建材類	121,130	3.95	115,078	3.93	108,732	3.40	92,352	2.17	41,399	1.84
模具及其他	149,673	4.88	164,507	5.62	139,599	4.37	301,358	7.08	167,485	7.46
合計	3,068,330	100.00	2,927,364	100.00	3,197,375	100.00	4,255,549	100.00	2,246,360	100.00



LEMTECH

...Leading Engineering & Manufacturing Technology

Your Trusted Partner in Business

www.lemtech.com

